

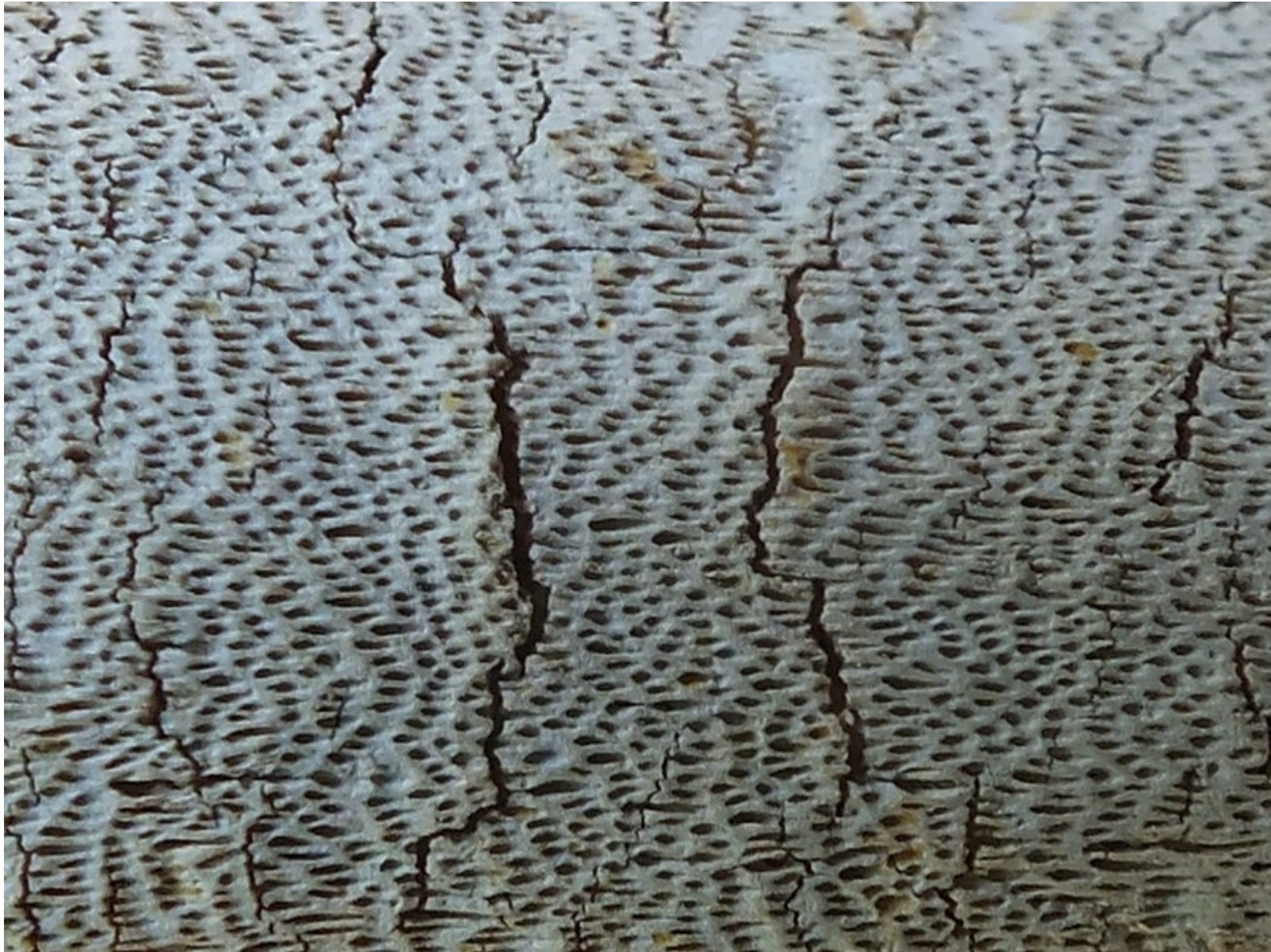
A Crust and a Bracket



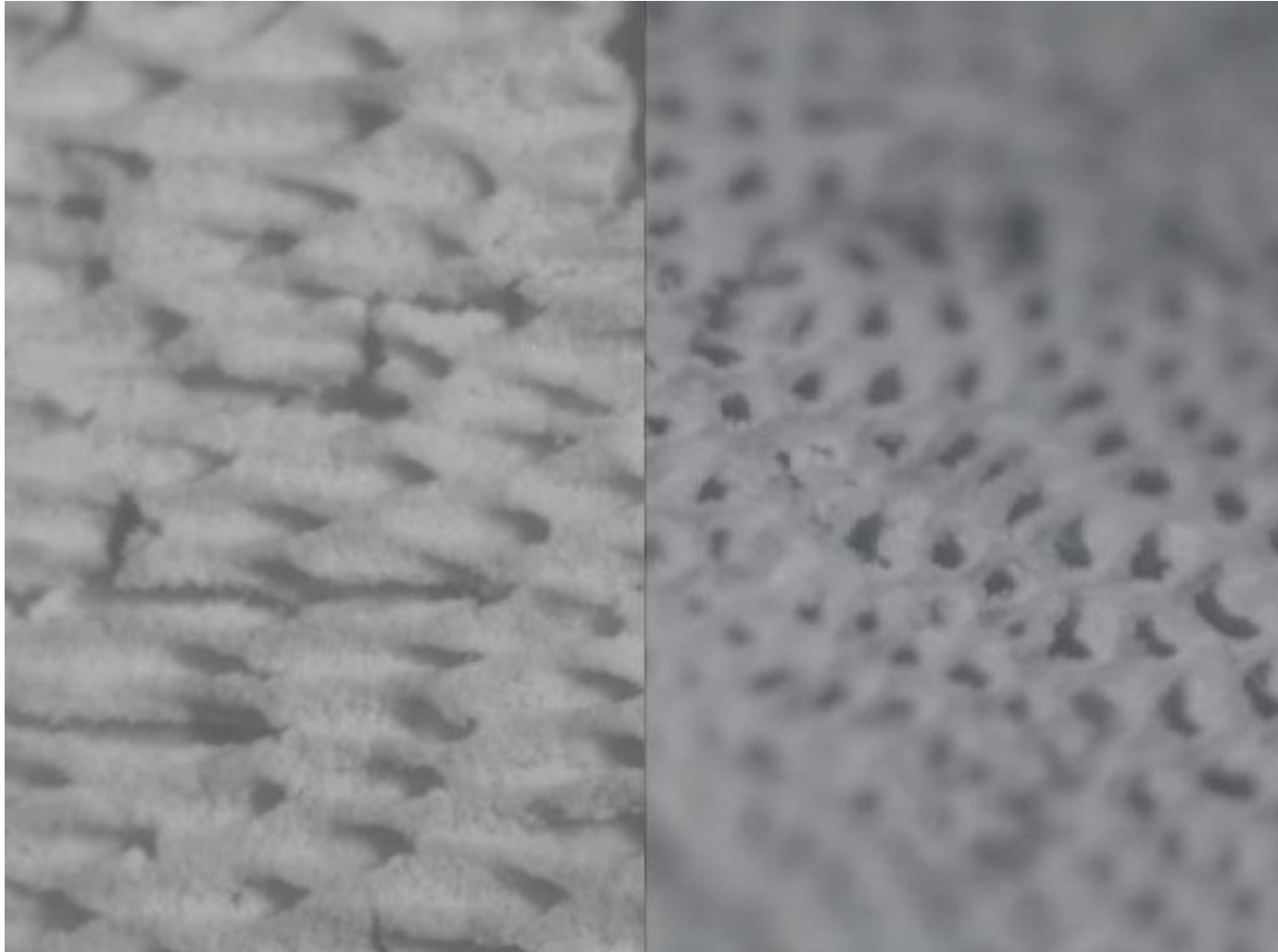


The Crust

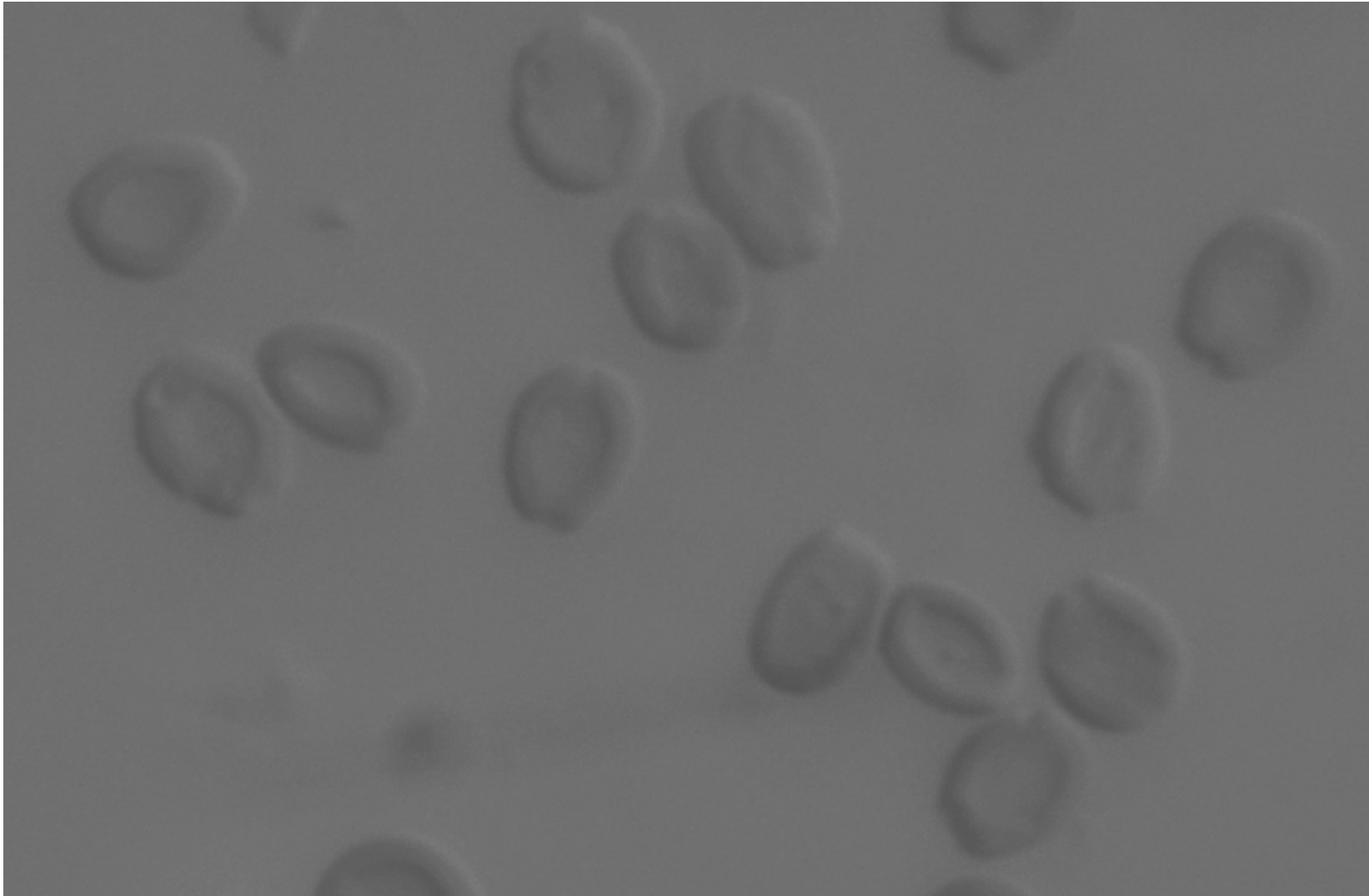
Chermside Hills
Foray, February 2016.
A white crust was
common on dead
stems of *Banksia*
spinulosa var. *collina*
that had been burned.



Close inspection confirmed that it was a
polypore



The pores look elongated but are angled down. End on they are roughly circular, albeit irregular



Distinctive thick-walled, unornamented,
truncate spores

From Hood

1. Fruitbody a flat sheet
2. Margin closely adhered to wood surface without a reflexed shelf
3. Fruitbody white or pink, not staining in KOH
9. Fruitbody white
10. Spores staining reddish in Melzer: *Perenniporia*
Spores not staining: *Ceriporia*, *Ceriporiopsis*

Staining reaction weak and patchy, some spores maybe
Spore shape fits *Perenniporia*

From Ryvar den

“The genus is above all characterised by the ellipsoid to distinctly truncate spores, which are usually thick-walled and have a variable dextrinoid reaction combined with a di- to trimitic hyphal system where the vegetative hyphae are dextrinoid to a varying degree.”

Some spores appeared to be dextrinoid, and staining mycelium gave patches of red, but that was hardly conclusive.

So it fits *Perenniporia*, and based on Hood, *P. medulla-panis*.

That is the type species of the genus from Sweden.

Safer to call it *Perenniporia aff medulla-panis*

The Bracket



Susan Nelles spotted this one because there were insects on it.

Chris Burwell (Qld Museum) identified them:

Drakiessa hackeri

Order Hemiptera, Family Aradidae

A family of flattened mycophagous bugs usually found under bark.

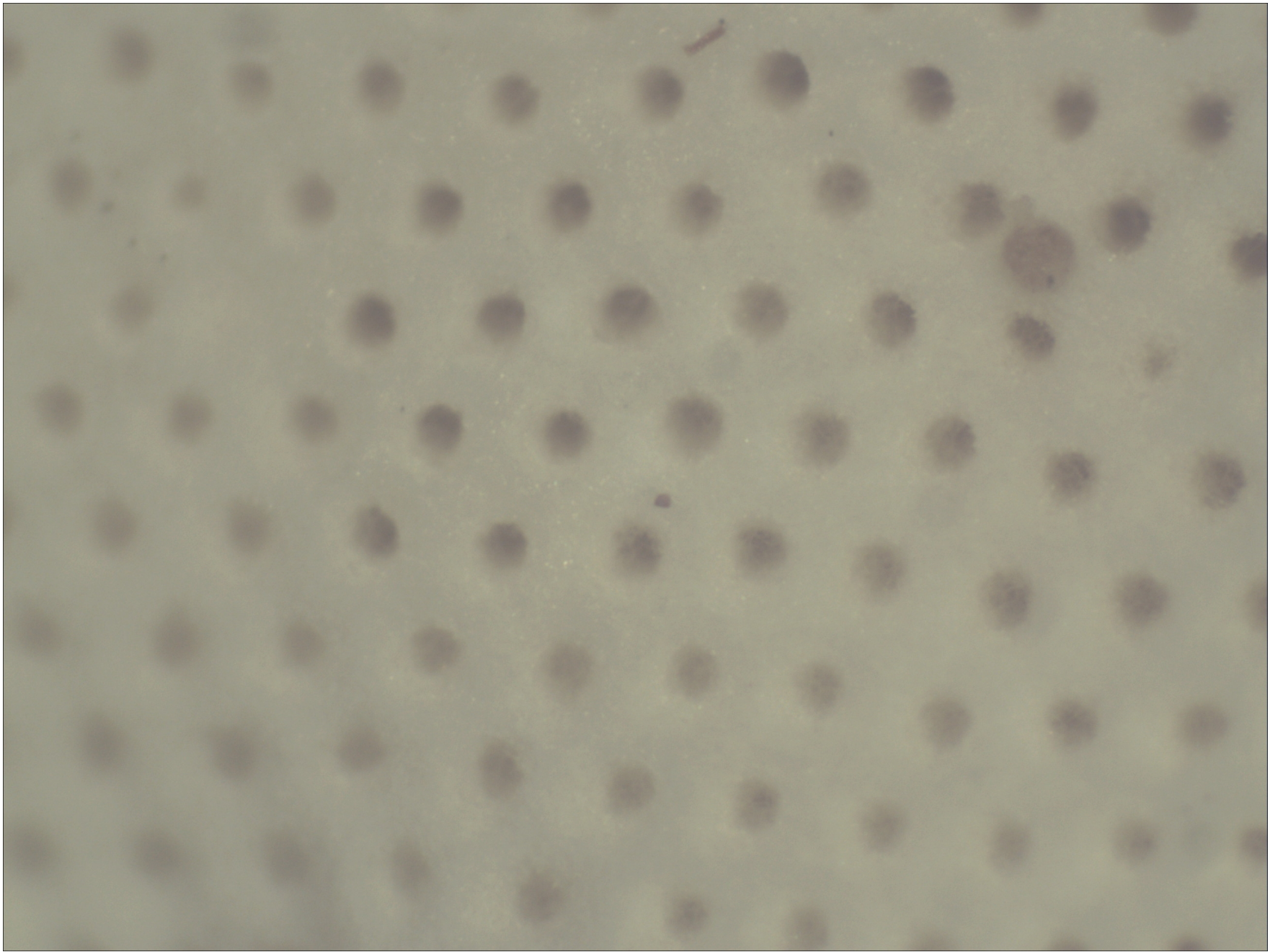


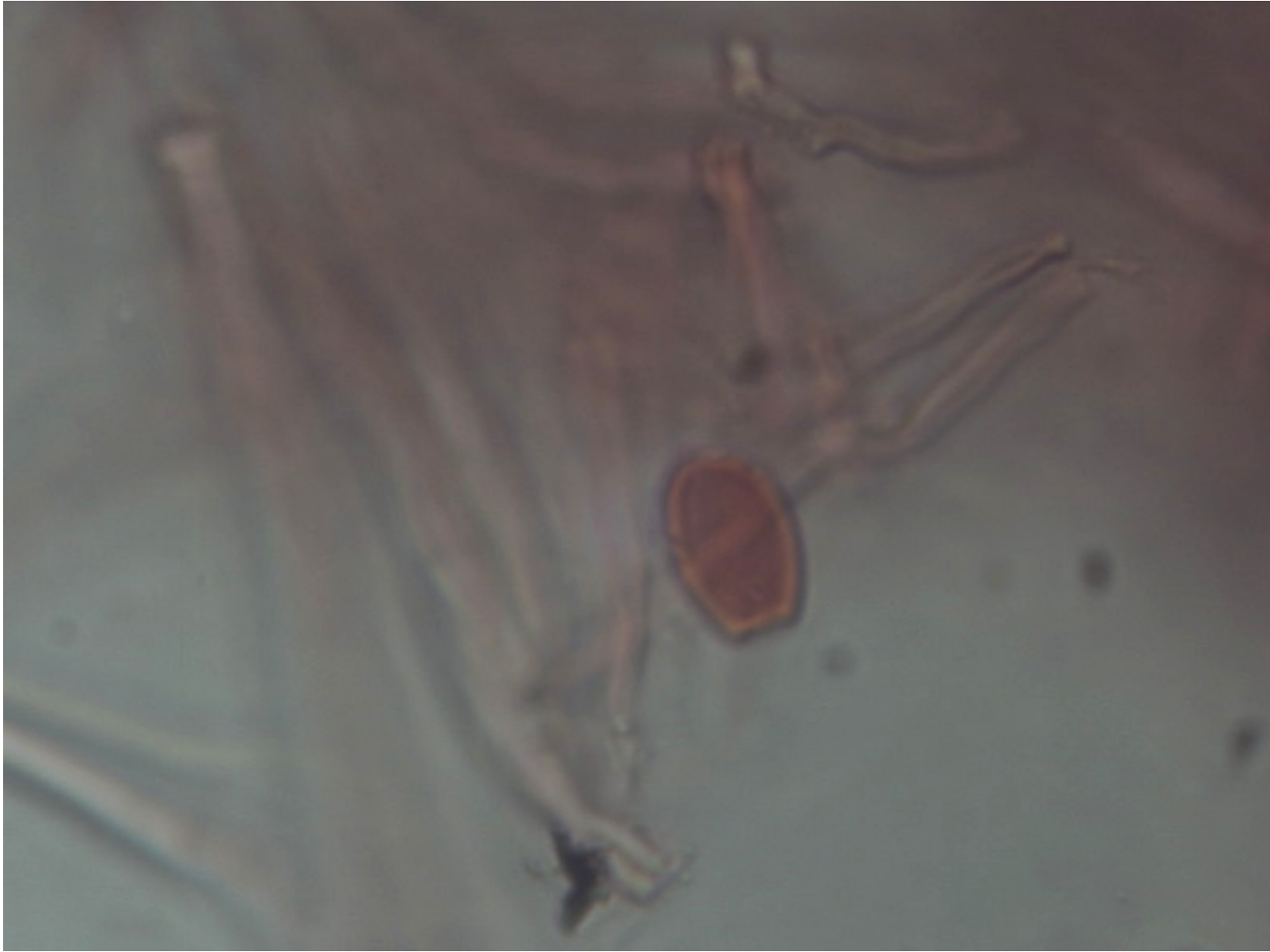
Firm but fleshy bracket

Mostly white but some pale ochre colouring on top

Bruises pale ochre

Clearly a polypore





Back to Hood...

1. [A bracket]
22. Fruitbody leathery with a texture and appearance of red meat *Fistulina* Not
23. Fruitbody leathery, woody, corky, cheesy, chalky or otherwise not fleshy or fleshy-gelatinose
24. Pore labyrinthine to gill-like Not
25. Fruitbody simple, each arising from its own stalk or attachment
27. Fruitbody without a stalk
41. Fruitbody tissues white, cream, other colours not brown or black
42. Fruitbody broadly attached

43. Fruitbody not woody

44. Without crystal incrustated cystidia

47. Pores regular

48. Fruitbodies not pink or mauve-pink or associated with brown cubical rot

49. Not a large (>5cm) corky etc bracket

50. Fruitbody not a leathery-pliant shelf etc

52. Small, leathery, white hoof-shaped bracket, smooth, truncated spores, red in iodine. *Perreniporia ochroleuca*

Or *Perreniporia aff ochroleuca*