

SLIDE1.

The QMS field trip on the 24 January 2009 was held at Maiala Rainforest area Mt Glorious on a fine but cloudy day starting 09:00 to 12:00. The previously advertised site at Nudgee was too dry and very few fungi were present a week prior to the foray.

QMS Field Trip 24 Jan 09

Maiala circuit Mt Glorious in the D'Aguilar National Park

Started 09:00

Finished 12:00

21 Participants covered about 700m through a grassy picnic area and part of the rainforest circuit.

Rain for 2 days prior to the trip made the area moist but not wet. The day was fine.

SLIDE2.

21 participants started by examining the grassy picnic area immediately up hill from the car park at Maiala. Then proceeded to the rainforest circuit for about 600 meters until 12:00 at the first board walk the trip was declared over. Some participants continued the rainforest walks, most returned back along the same path.

The area had rain over the preceding 2 days, after a short dry period. The ground was moist but not wet.

QMS Field Trip 24 Jan 09

43 fungi were found. 5 in picnic area, 38 on rainforest circuit.

18 were identified to species level (by Sapphire)

10 were Fungimap Targets

Numerous examples of some species were found

6x for *Cymatoderma elegans*

4 Specimens were collected.

Most fungi were on wood.

SLIDE3.

Most of the fungi were on wood.

5 fungi found in the picnic area, only 1 in the grass, the rest in or about the litter under tree island in the picnic area.

38 fungi were found along the rainforest circuit.

18 were identified to species level by Sapphire.

10 were fungimap targets.

There were numerous examples of some fungi.

4 samples were collected.



Conocybe sp.

SLIDE4.

The only fungi found in the grass was a Conocybe species



cornea



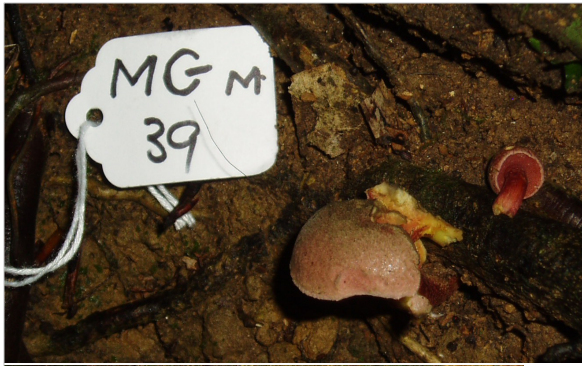
auricula-jude

Auricularia 2 species

SLIDE5.

2 species of the jelly fungi, Auricularia were found, cornea, auricula-judae.

Perhaps Sapphire could explain the important characteristics for differentiation.



2 Boletes

Pored Bolete



Gilled Bolete

LIDE6.

2 boletes were found, one with the typical pored under surface, the other a gilled bolete.

Amauroderma rude



SLIDE7

One of the Fungimap targets was Amauroderma rude found low on a tree stump. Characterised by staining red if the pored surface is scratched, later turning black.

QMS Field Trip 24 Jan 09

Thank you to all participants and the field trip organiser, Jon.

Special thanks to our president, Sapphire for her work in identifying specimens during and after the trip.

Thank you for your attention.

SLIDE8.

Thank you to our trip organiser Jon and to all those who participated.

A special thank you to our president Sapphire for the identifications made during the trip.

Thank you for your attention.