



Fig. 109. *Lycopodon pyriforme*. (Bedfordshire, Maulden Woods, Nov. 1976, Outen).

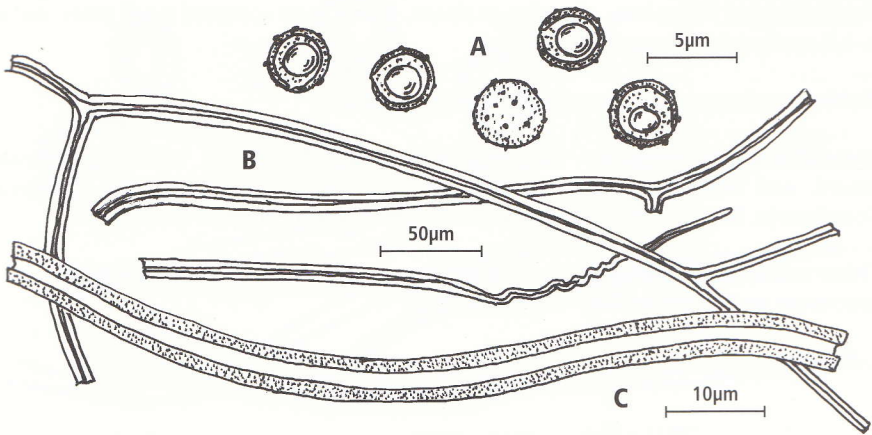


Fig. 110. *Lycopodon pyriforme* (Derbyshire, Stoke, 3 Oct. 1954, Palmer 342). A, Spores; B, capillitial threads; C, detail of capillitial thread.