

QMS Forays 26-27 June 2010

Doggrell Loop, Kin Kin, Cooloola

- Araucarian microphyll to notophyll vine forest, mixed canopy species including *Eucalyptus cloeziana*, *Corymbia* sp., *Araucaria cunninghamii* and *Agathis robusta*
- Regional Ecosystem = 12.9-10.16
- 34 macrofungi = 41% species, 41% genus & 15% morphogroup

Southern Cooloola - Lake Cooroibah Road section, Great Sandy National Park

- Wallum Woodland with scattered Eucalyptus overstorey, midstorey dominated by *Melaleuca quinquenervia*, with *Banksia robur* (Swamp banksia), patches of *Allocasuarina littoralis* and sedgy understorey.
- Regional Ecosystem = 12.5.3
- 27 macrofungi = 41% species, 48% genus & 11% morphogroup

***Phylloporus* aff.
*leucomycelinus***
– F. Guard



Boletus ovalisporus
– M. Prance



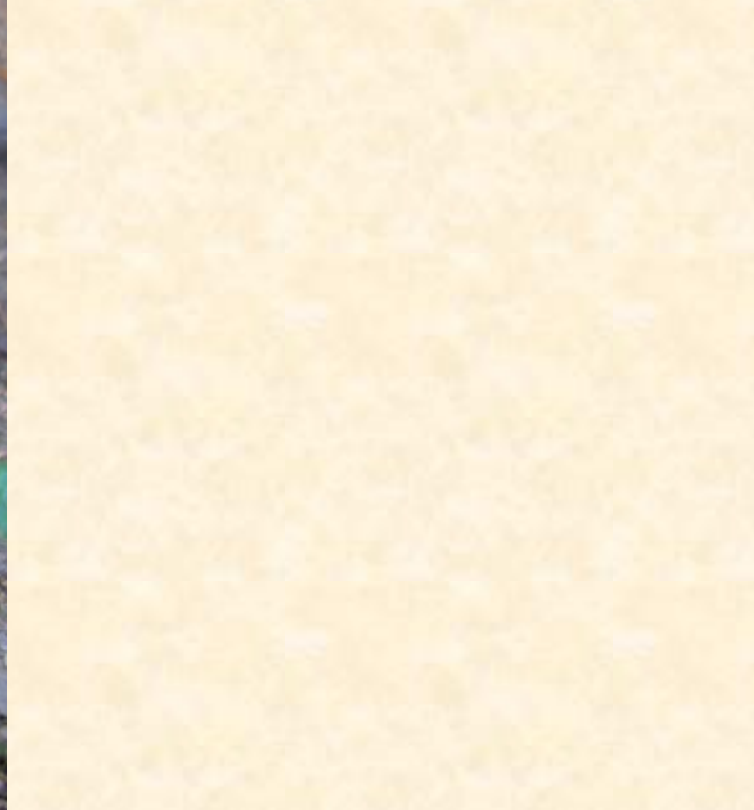
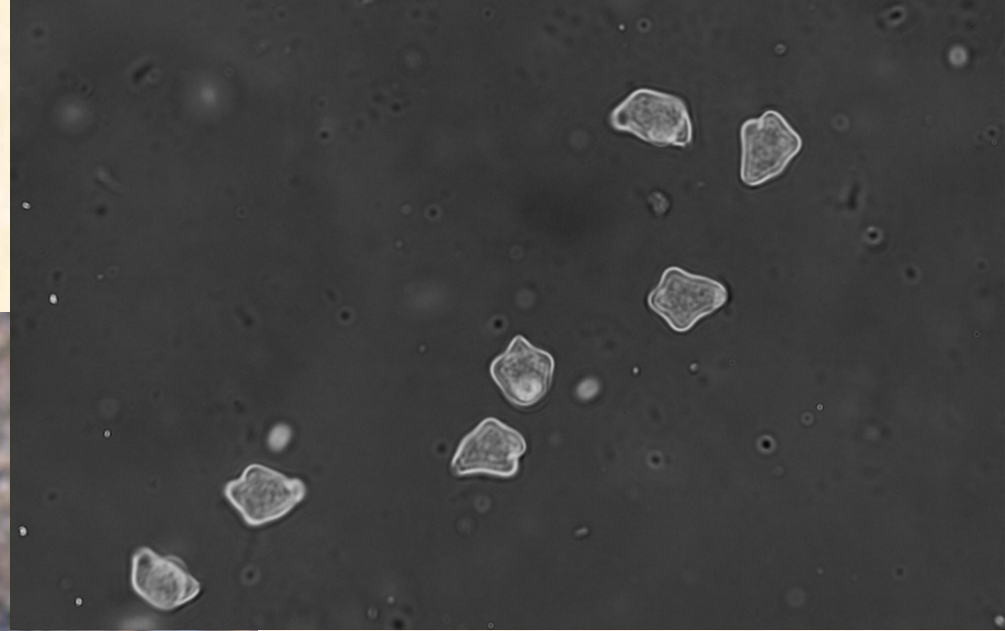
Marasmius sp.

- M. Prance, S. McMullan-Fisher & F. Guard



Psilococybe sp.

- S. McMullan-Fisher



Tremella foliaceae

- S. McMullan-Fisher

