

A photograph of a dense forest with a path covered in ferns. The path is narrow and leads into the distance, flanked by lush green ferns and other vegetation. Tall trees with thin trunks are visible in the background, and sunlight filters through the canopy. The overall scene is a lush, green bushland.

QMS Residential Foray 2016 Review

Maroochy Bushland Botanic Gardens Introduction & one specimen keyed out

Foray
11th March 2016

GROUP SIZE



Part of the Group- getting a whole group together was like herding cats!

FORAY LENGTH





All after a *Leucocoprinus* in hay!

PHOTOGRAPHERS

I'm told there was an Earthstar here, but who knows what was going on!





RECORD KEEPING

The most rewarding part of a weekend foray is actually identifying specimens

LAB WORK





Seeking & sharing
information



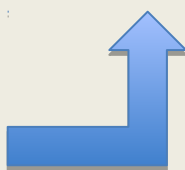
Careful examination



Leads to an A-ha moment



Written descriptions essential



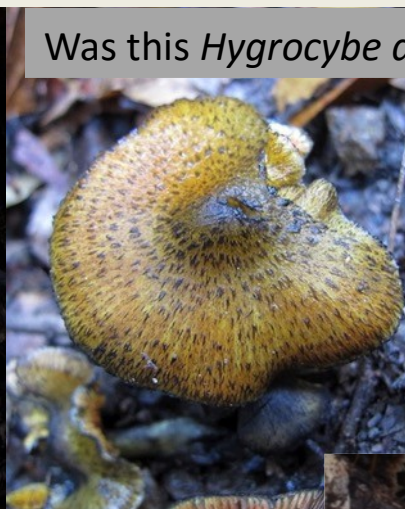
THE GOAL!

Specimens : Described
Labelled
Spore printed
Dried & packaged
Keyed out where possible
Ready for transfer to BRI

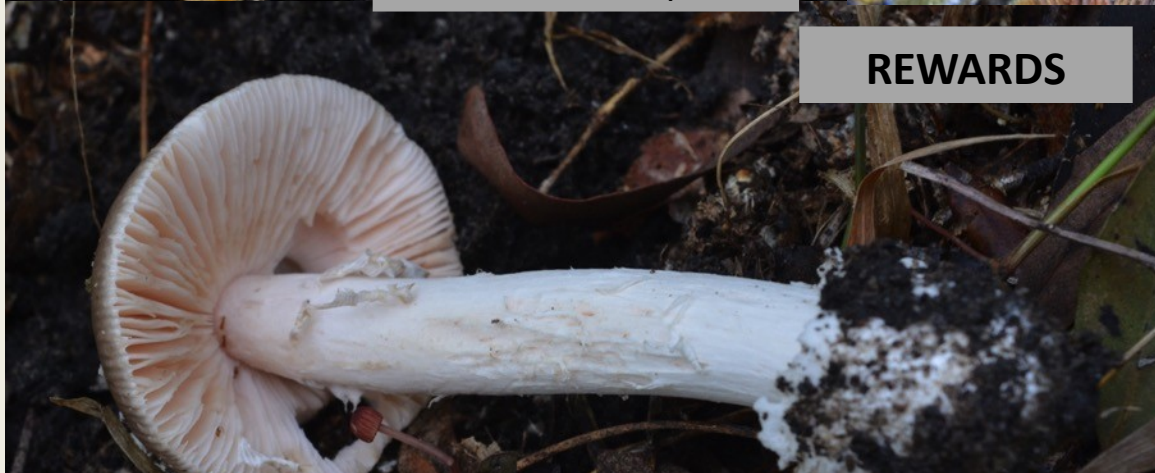




Was this a *Gomphus*?



Was this *Hygrocybe astatogala*?



REWARDS

Is *Amanita roseolamellata* rare enough to be on the Red List?



Which *Hygrocybe*?



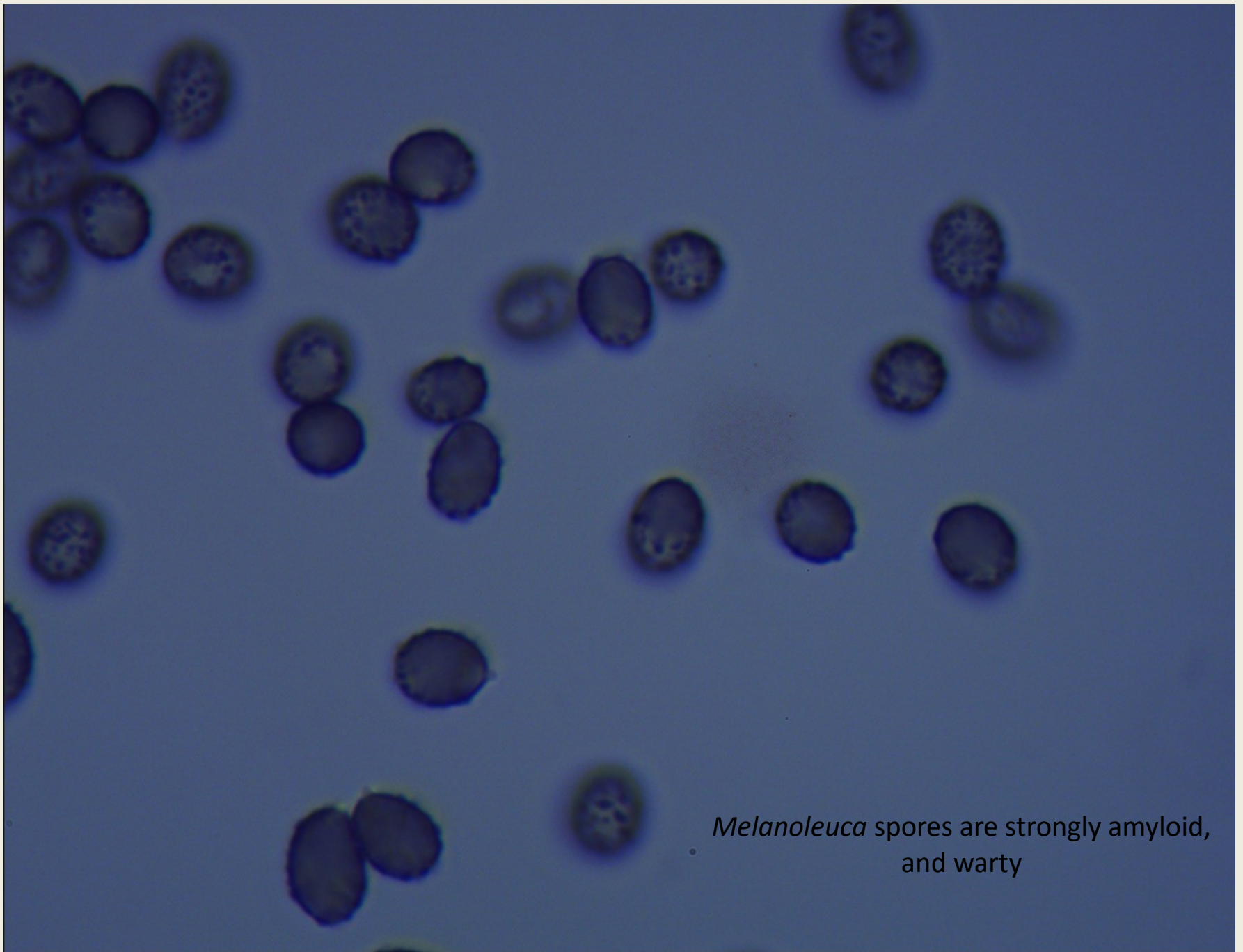
What bolete is this?

Keying out one specimen



using FunKey





Melanoleuca spores are strongly amyloid,
and warty

USING FUNKEY

GENERA TO CHOOSE FROM		185
Spore print	WHITE	89
Substrate	SOIL	52
Pileus shape	ROUNDED to APPLANATE	51
Surface	DRY/MOIST	49
Margin	SMOOTH	44
Lamellae	ADNATE/SINUATE	28
Volva	NO	27
Partial veil/Annulus	NO	25
Spores Reaction to Melzers	AMYLOID (blue)	7
Ornamentation	WARTY	5

REMAINING GENERA *Russulas*, *Lactarius* x2 groups, *Melanoleuca*, *Lentinellus*

Russulas have chalky stems

Lactarius exude milky latex

Lentinellus have serrated gill edges

Therefore by a simple process of elimination we have ID'd these specimens to
The Genus of ***Melanoleuca***.

ALTERNATIVE FUNKEY PATHWAY

USING THE MAGIC WAND TO CHOOSE CHARACTERS

GENERA TO CHOOSE FROM 185

Spore print	WHITE	89
Gill attachment	SINUATE/ADNATE	56
Stipe diameter	~10mm	24
Substrate	SOIL	19
Spore ornamentation	WARTY	5
Partial veil/annulus	NO	4

REMAINING GENERA *Russula, Lactarius, Melanoleuca, Leucopaxillus*

Russulas have chalky stems

Lactarius exude milky latex

Leucopaxillus have clamp connections

Therefore by an even quicker process of elimination we have ID'd these specimens to the Genus of ***Melanoleuca***.



Melanoleuca abutyracea

Cheilocystidia –narrow, fusoid, should be encrusted

Foray results

Total number of specimens recorded 46

AGARICS 24	9 to species
POLYPORES 8	4 to species
BOLETES 9	5 to species or sp. group
CORAL 1	
PUFFBALL 1	
EARTHSTAR 1	1 to species
SLIME MOULD 1	
OTHER 1 (<i>?Gomphus</i>)	